

BOWLERS MILL
RESERVOIR

ZION
CROSSROADS

FERNCLIFF

LOUISA INDUSTRIAL
AIR PARK

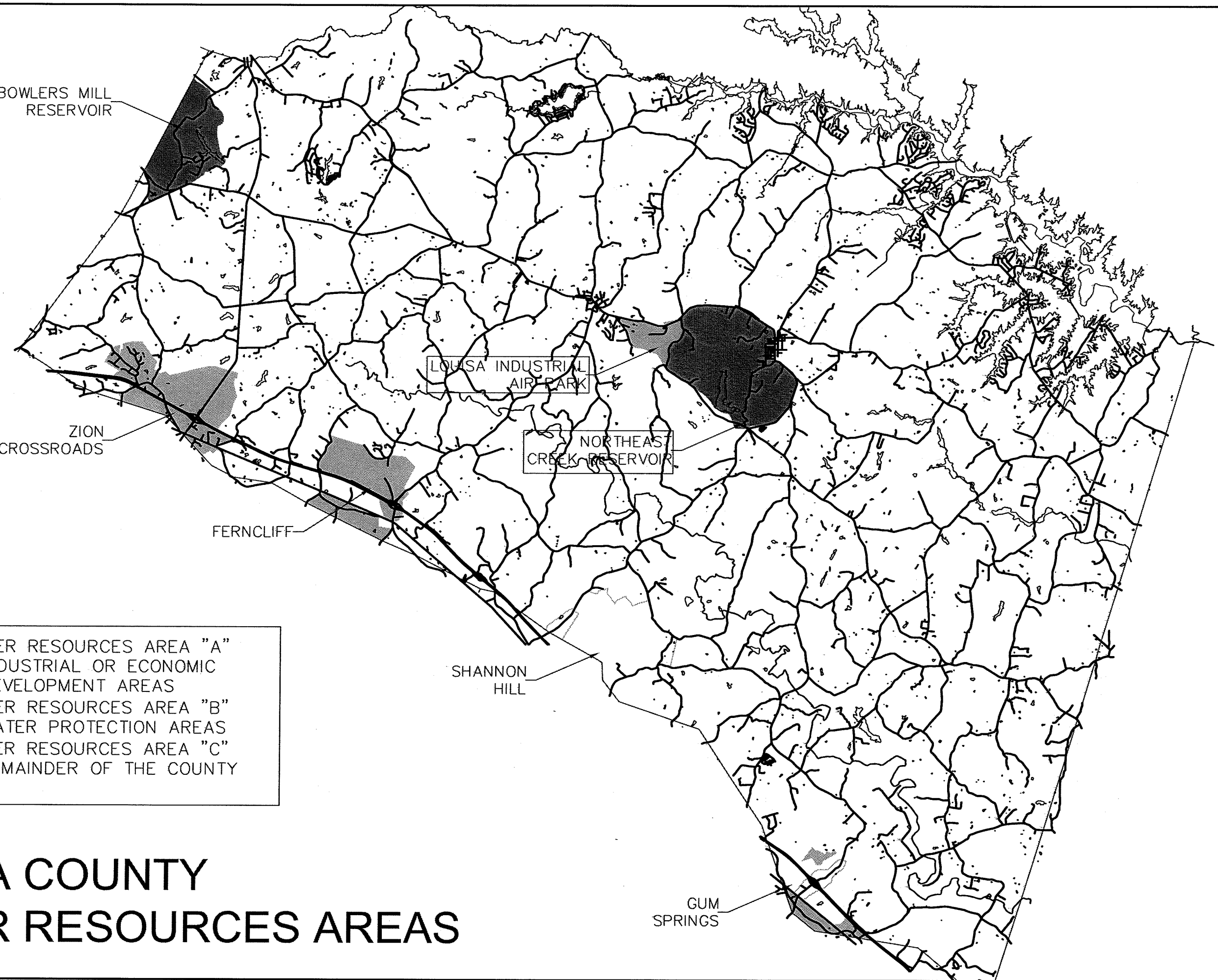
NORTHEAST
CREEK RESERVOIR

SHANNON
HILL

GUM
SPRINGS

■ WATER RESOURCES AREA "A"
 INDUSTRIAL OR ECONOMIC
 DEVELOPMENT AREAS
 ■ WATER RESOURCES AREA "B"
 WATER PROTECTION AREAS
 □ WATER RESOURCES AREA "C"
 REMAINDER OF THE COUNTY

LOUISA COUNTY WATER RESOURCES AREAS



CORPORATE HEADQUARTERS: 1000 N. W. 10th St., Ft. Lauderdale, FL 33304-4007
 PHONE: (305) 794-7000 FAX: (305) 794-7000
 MEMPHIS OFFICE: 1000 N. W. 10th St., Memphis, TN 38111-4811
 PHONE: (901) 748-3370 FAX: (901) 748-3370
 TAMPA OFFICE: 1000 N. W. 10th St., Tampa, FL 33603-4007
 PHONE: (813) 259-1234 FAX: (813) 259-1234

ENGINEERS • ARCHITECTS • SURVEYORS • LANDSCAPE ARCHITECTS • ENVIRONMENTAL SCIENTISTS • GEOGRAPHIC INFORMATION SYSTEMS CONSULTANTS • CONSTRUCTION MANAGERS

TIMMONS
 Founded 1958

SHEET NO.
 1 OF 1
 JOB NO.
 19394

REVISION DESCRIPTION	
DATE	REVISION DESCRIPTION
2/25/02	
D.ARRINGTON	DRAWN BY
D.MAXWELL	DESIGNED BY
D.MAXWELL	CHECKED BY
	SCALE
	1" = 15,000'

LOUISA CO. STORMWATER ORDINANCE
 OVERALL WATER RESOURCES AREA MAP